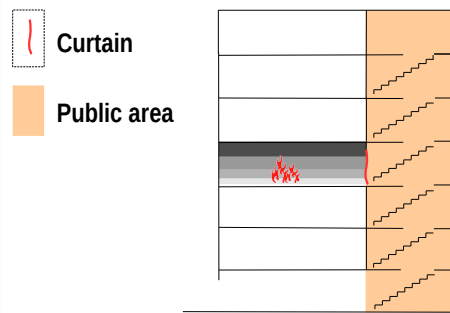


# OPERATIONAL GUIDELINE – SMOKE BLOCKER (CURTAIN)

## RANGE OF USE

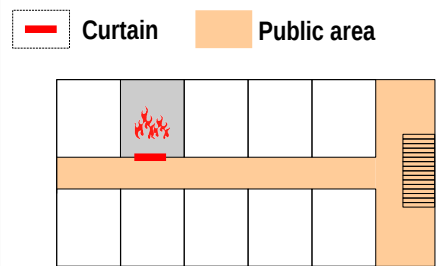
Smoke blocking curtains will be used in structural and content fires affecting multi-tenant buildings with public stairwells or corridors. Incident Commander will also call for the use of smoke blocking curtains depending of the building layout to help smoke movement control, isolate fire or assist ventilation operations.

Fire in building with public stairwell



Fire in building with public corridor

(residences, hotels, schools, public dorms, office buildings, etc...)



**SMOKE MOVEMENT CONTROL IS A PRIORITY FOR THE SAFETY OF OCCUPANTS IN A BURNING BUILDING**

## SET UP

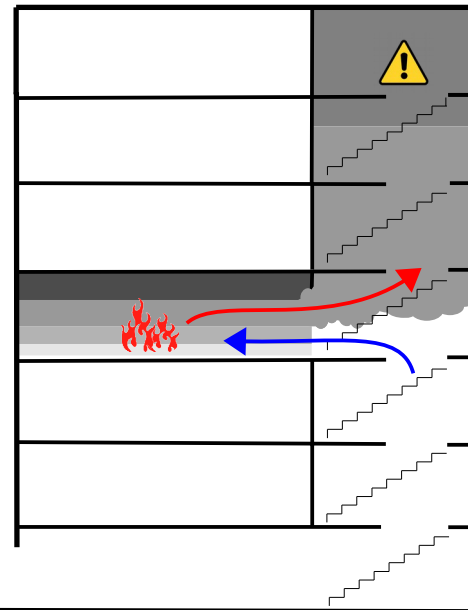


## USE #1: SMOKE MOVEMENT AND CONTROL

### NO CURTAIN

Fire gases escape to the public stairwell or corridor creating a potentially dangerous situation for any occupants in the building and allowing fire to spread out.

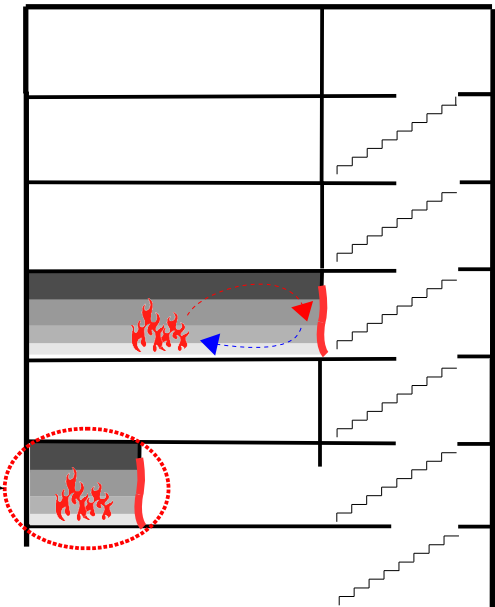
Even when using the access door to control fire gases, an important amount of fire gases leaks out to the stairwell through the gap let for the hose to enter.



### WITH CURTAIN

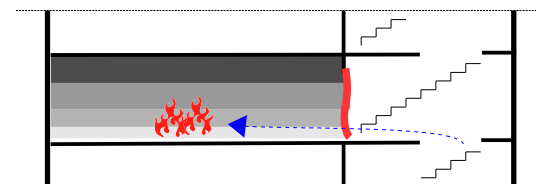
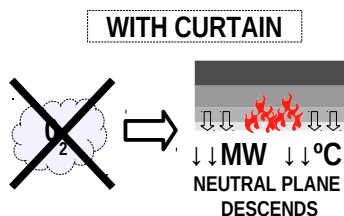
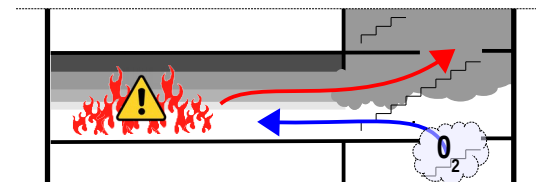
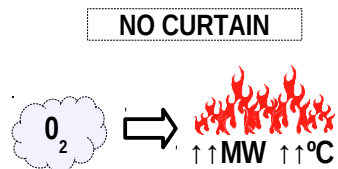
Fire gases are confined in the fire room keeping public stairwell or corridor clean and safe as an egress path for any occupants in the building.

Curtain should be placed as close to the seat of fire as possible.



# OPERATIONAL GUIDELINE – SMOKE BLOCKER (CURTAIN)

## USE #2: LIMIT FIRE ACCESS TO OXYGEN



## USE #4: HELP HOSE ENTRY THROUGH MAIN DOOR



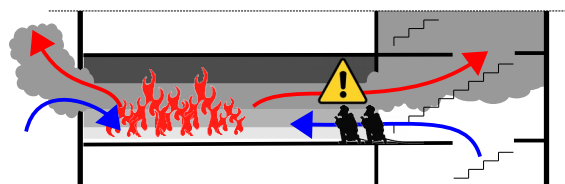
## USE #5: REDUCE SET BACK DISTANCE FOR PPV BLOWERS



## USE #3: ENFORCE FLOWPATH TO ALLOW FF ACCESS WITH FRESH AIR ON THEIR BACK

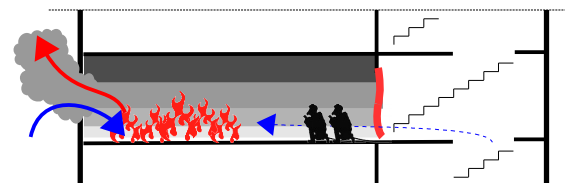
**NO CURTAIN**

Firefighters make interior progression through bidirectional flow. Hot fire gases just above firefighters.



**WITH CURTAIN**

Flow of hot fire gases above firefighters making interior progression is blocked creating a safer environment.



## USE #6: ASSESING FIRE CONDITIONS ON CURTAIN'S MOVEMENT



- 1 Curtain **permanently flowing inwards** proves exterior ventilation at the same or higher level.
- 2 Curtain in a **vertical still position** is a sign of confined compartment with no ventilation. Temporary movement of the curtain is possible to balance differential pressure.
- 3 Curtain **permanently flowing outwards** may indicate a wind driven situation or fire a lower level.

